

# 18818 TELLER

± 1,331 - 2,084 SF AVAILABLE FOR LEASE



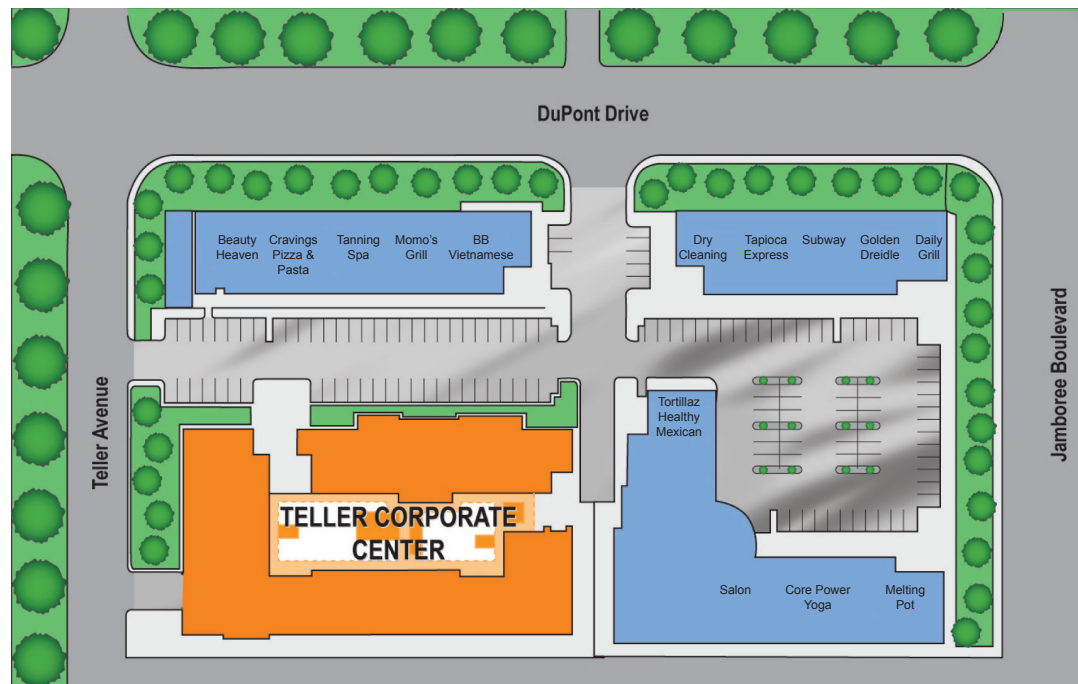
***Voit***

REAL ESTATE SERVICES

Josh Samuels  
Associate  
Lic #01991785  
949.263.5330  
jsamuels@voitco.com

Carter Harrington  
Vice President  
Lic #01763924  
949.263.5396  
charrington@voitco.com





**Amenities Include:**



**Monument Signage on Teller**

Advertise your business the way it deserves



**Surface & Covered Parking**

Reserved Parking Available



**Ideal Proximity to Airport and Fwys**

Close proximity to 405, 55, and 73 Freeways



**Abundant Food Options**

Increase productivity with 9 restaurants within walking distance



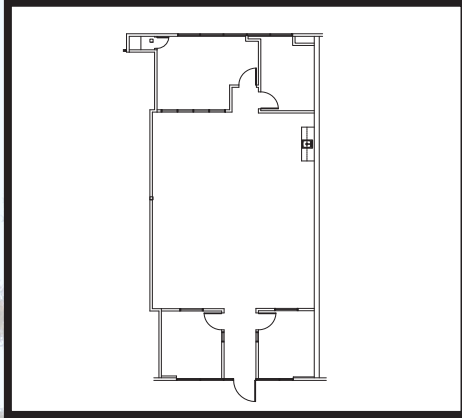
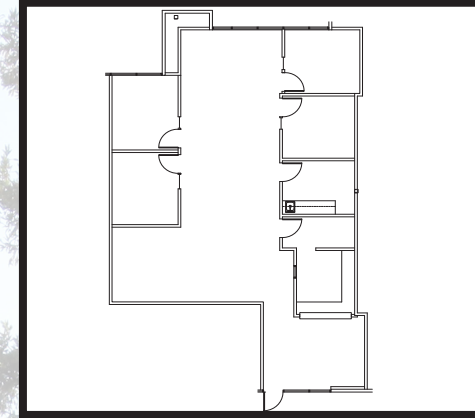
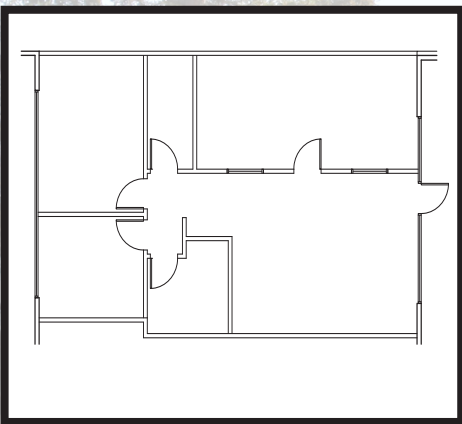
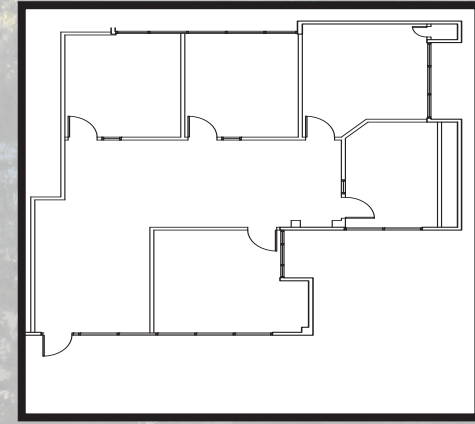
**Elevator Served**

Making it convenient for everyone to visit your office



**Close Access to Irvine Spectrum**

Endless options for lunch meetings and happy hours

**Suite 110 - ±1,906 SF****Suite 112 - ±2,084 SF****Suite 120 - ±1,331 SF****Suite 275 - ±1,729 SF**

Rentable SF	Suite	Description	Available	Rate/SF
1,908 SF	110	3 Window Line Offices, Kitchenette with Sink, Large Window Line Conference Room	5/1/18	\$2.35 FSG
2,084 SF	112	±4 Offices, Break Room, Kitchenette with Sink, Conference Room, Large Open Area	30 Days Notice	\$2.35 FSG
1,331 SF	120	2 Window Offices, Window Line Conference Room, Reception Area, Server/Storage Room, Small Break Room	Now	\$2.35 FSG
1,729 SF	275	±4 Window Lined Offices, Window Lined Conference Room, Server Room, Reception Area, Open Area	30 Days Notice	\$2.35 FSG





# ***Voit***

REAL ESTATE SERVICES

**JOSH SAMUELS**  
 Associates  
 Lic. #02009022  
 949.263.5330  
[jsamuels@voitco.com](mailto:jsamuels@voitco.com)

**CARTER HARRINGTON**  
 Vice President  
 Lic. #01762924  
 949.263.5396  
[charrington@voitco.com](mailto:charrington@voitco.com)

